

WORKING PROJECT

Album
KM (Steel Structures)
Project:

Almaty, 2024

Inv. No. / Signature	Signature and Date	Replaces Inv. No.

Inv. No. / Signature	Signature and Date	Replaces Inv. No.

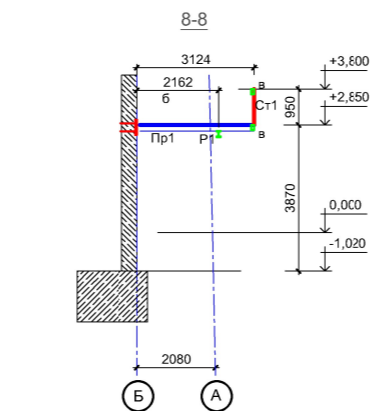
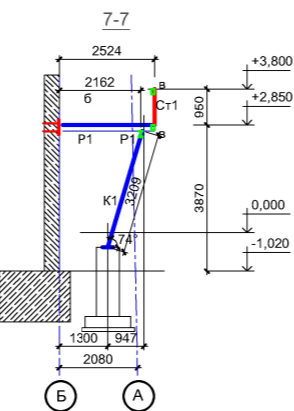
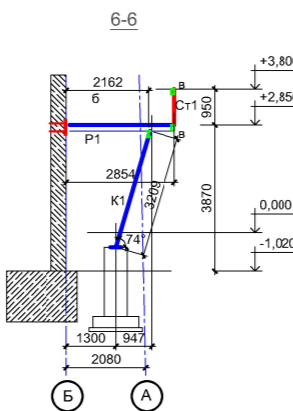
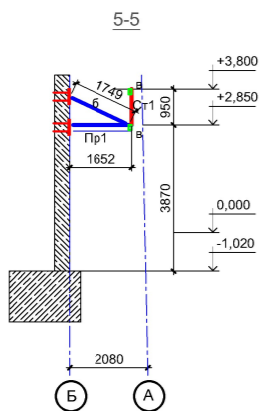
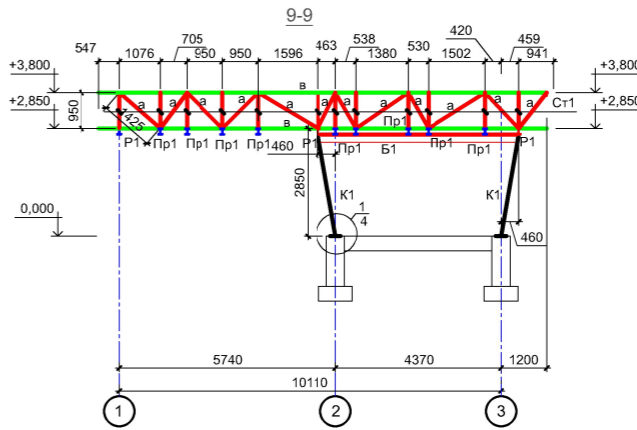
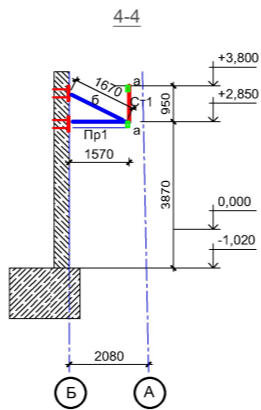
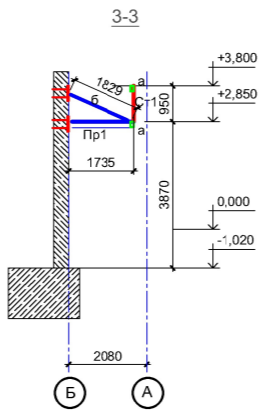
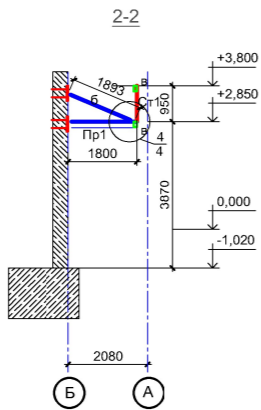
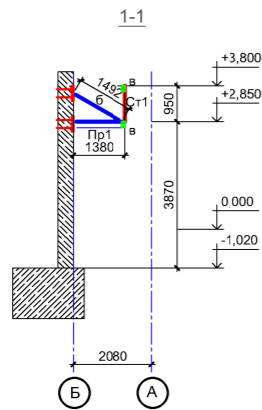
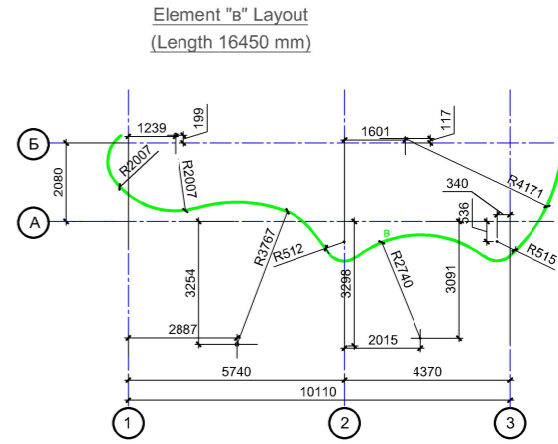
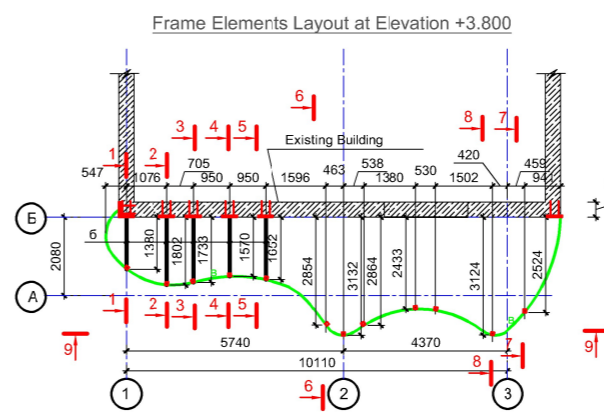
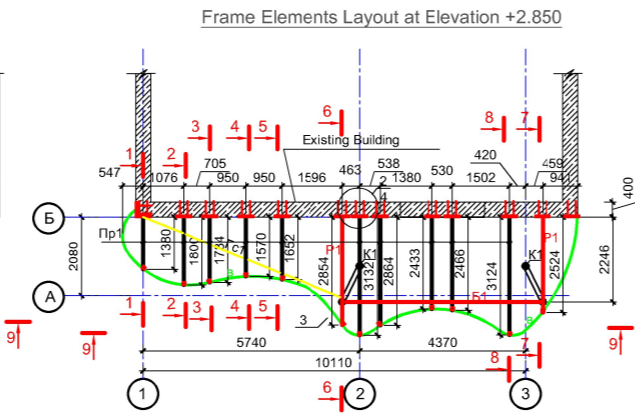
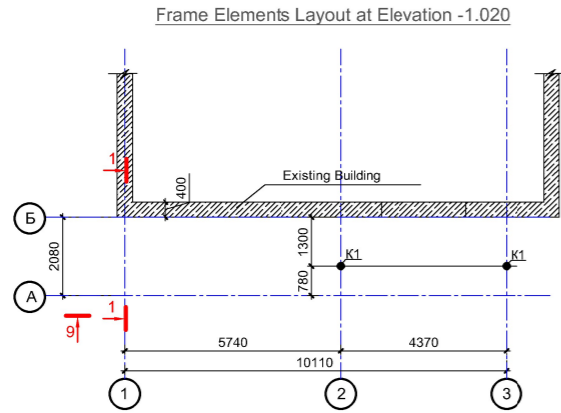
Technical Steel Specification										
Profile Type (GOST, TU)	Steel Grade and GOST	Designation and Profile Size	N n.n.	Steel Weight by Structural Elements, t						Total Weight, t
				Columns	Beams Girders	Braces Struts	Purlins	Gable	Sandwich Panel Gates	
I-Beam with Parallel Flange Faces, Type (B), Standard I-Beam ST RK EN 10034-2012	C245 GOST 27772-2015	┐ 2051	1		0,239		0,56			
			2							
			3							
	Grand total:		4		0,239		0,56			
Total Profile Quantity			5		0,239		0,56		0,799	
Round Pipe ST RK EN 10034-2012	C245 GOST 27772-2015	○ 140x5	6	0,091						
			7							
			8							
	Grand total:		9							
Total Profile Quantity			10							
Rectangular Steel Pipe according to GOST 30245-94	C245 GOST 27772-2015	▣ 140x80x5	11			0,710				
			12							
			13							
	Grand total:		14			0,710				
Total Profile Quantity			15			0,710			0,710	
Square Steel Tube according to GOST 30245-94	C245 GOST 27772-2015	▣ 80x80x4	16					0,284		
		▣ 200x200x5	17							
			18							
			19							
	Grand total:		20					0,284		
Total Profile Quantity			21					0,284	0,284	
Equal Angle Bars ST RK EN 10056-1-2012	GOST 27772-2015	┐ 50x50x5	22			0,023				
		┐ 110x110x7	23							
			24							
	Grand total:		25			0,023				
Total Profile Quantity			26			0,023			0,023	
Hot-Rolled Steel Plate ST RK EN 10025-1-2015	C245 GOST 27772-2015	— t=6	27		0,04	0,025	0,025			
		— t=8	28	0,025	0,05		0,025			
		— t=10	29							
		— t=12	30							
		— t=14	31							
		— t=16	32							
		— t=20	33	0,1						
		— t=24	34							
		— t=30	35							
	Grand total:		36	0,125	0,09	0,025	0,05			
Total Profile Quantity			37	0,125	0,09	0,025	0,05		0,29	
Total Weight, Steel Grade C245			38	0,216	0,329	0,758	0,61	0,284		2,106

1. For Welding 1% - 2.106 × 0.01 = 0.021 tons
2. Mass Adjustment for KMD Development 3% - 2.106 × 0.03 = 0.063 tons
3. For Waste 3.7% - 2.106 × 0.037 = 0.078 tons

						Emirates Office				
Chan.	Col.	Sheet	Doc №	Signature	Date			Stage	Sheet	Sheets
Developed by	Bagmet E.			<i>Bagmet E.</i>		Block 1		WP	2	---
Checked										
N. control										

Technical Specification of Steel

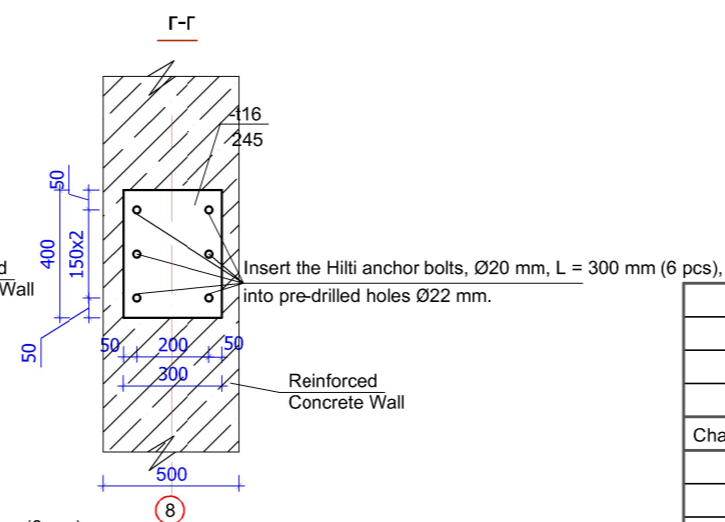
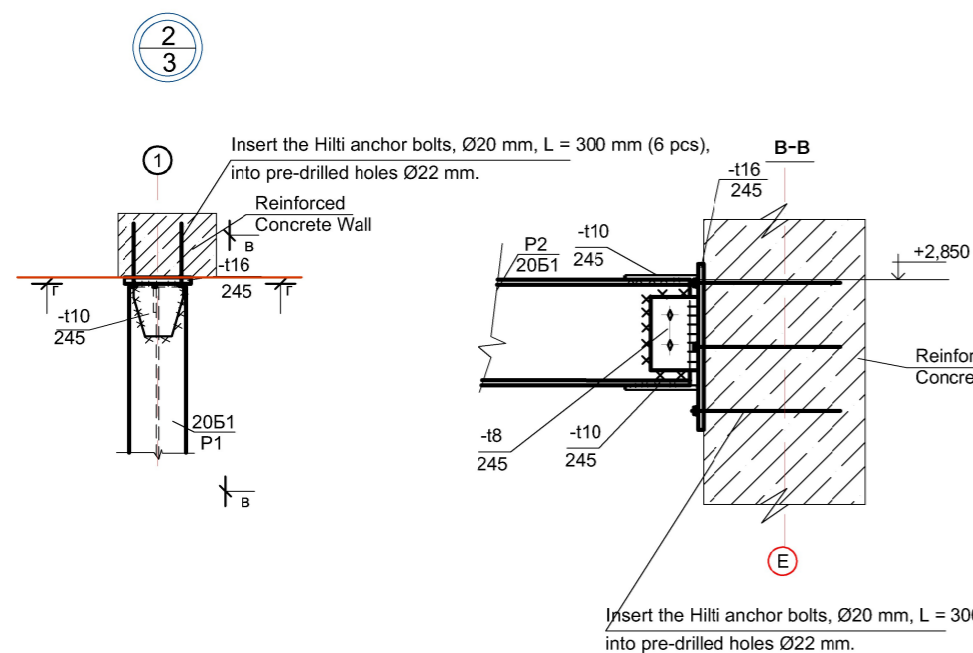
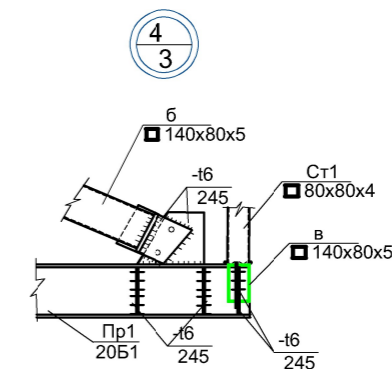
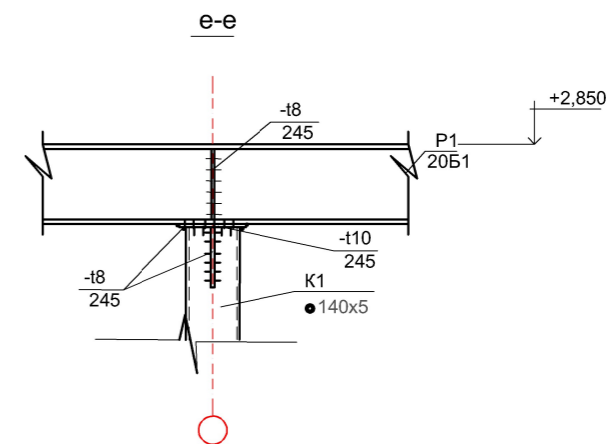
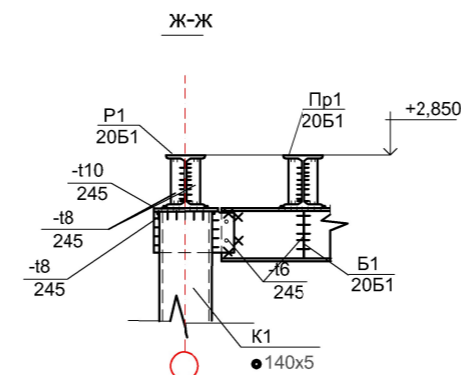
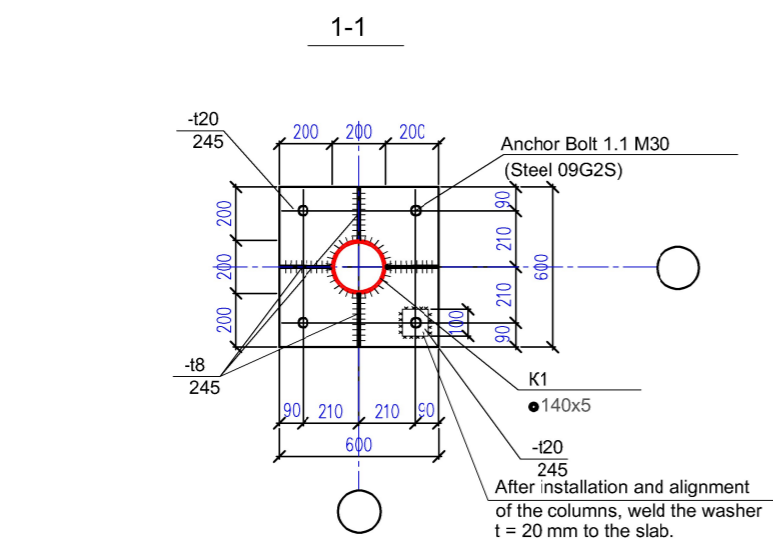
BOIKO
architects
License №23013832



Mark	Section		Support Forces			Con. Gr.	Steel Grade	Note
	Sketch	Pos.	Composition	N T	M T-M			
K1		1	140x5	min -7.0 max -43.0	4.00		C245	
		2			2.0		C245	
P1		3	I 20B1		8.0	15.0	C245	
		4					C245	
B1		5	I 20B1		6.0	6.0	C245	
		6					C245	
Пp1		7	I 20B1		6.0	6.0	C245	
ГC1		8	50x50x5	10.0			C245	
CT1		9	80x4	10.0			C245	
a		10	80x4	10.0			C245	
6		11	140x80x5	10.0			C245	
в		12	140x80x5	10.0			C245	

1. Refer to this sheet together with sheets KM 4.
2. Refer to the Bill of Elements on sheet KM 3.
3. Fire resistance rating for load-bearing columns and beams - R120.
Fire resistance rating for roofbeams, purlins, and braces - R15.

						Emirates Office			
Chan.	Col.	Sheet	Doc №	Signature	Date				
						Block 1	Slage	Sheet	Sheets
							WP	3	---
Developed by	Bagmet E.			<i>Bagmet</i>		Frame Elements Layout	<div>BOIKO architects License №23013832</div>		
Checked									
N. control									



1. Refer to this sheet along with sheets KM 3.
2. Refer to the Bill of Elements on sheet KM 3.
3. Fire Resistance Rating for Load-Bearing Columns and Beams - R120.
Fire Resistance Rating for Roof Beams, Purlins, and Braces - R15.

						Emirates Office			
Chan.	Col.	Sheet	Doc №	Signature	Date				
						Block 1	Stage	Sheet	Sheets
							WP	4	---
Developed by		Bagmet E.		<i>Bagmet E.</i>		Structural Detail 1...6	<div>BOIKO architects License №23013832</div>		
Checked									
N. control									